

Hoshino Resorts OMO7 Asahikawa

星野集團 OMO7 旭川

01 April 2019 - 31 March 2020



April 2019

Sun	Mon	Tue	Wed	Thu	Fri	Sat
	1	2	3	4	5	6
7	8	9	10	11	12	13
14	15	16	17	18	19	20
21	22	23	24	25	26	27
28	29	30	31			

May 2019

Sun	Mon	Tue	Wed	Thu	Fri	Sat
			1	2	3	4
5	6	7	8	9	10	11
12	13	14	15	16	17	18
19	20	21	22	23	24	25
26	27	28	29	30	31	

June 2019

Sun	Mon	Tue	Wed	Thu	Fri	Sat
						1
2	3	4	5	6	7	8
9	10	11	12	13	14	15
16	17	18	19	20	21	22
23	24	25	26	27	28	29
30						

July 2019

Sun	Mon	Tue	Wed	Thu	Fri	Sat
	1	2	3	4	5	6
7	8	9	10	11	12	13
14	15	16	17	18	19	20
21	22	23	24	25	26	27
28	29	30	31			

August 2019

Sun	Mon	Tue	Wed	Thu	Fri	Sat
				1	2	3
4	5	6	7	8	9	10
11	12	13	14	15	16	17
18	19	20	21	22	23	24
25	26	27	28	29	30	31

September 2019

Sun	Mon	Tue	Wed	Thu	Fri	Sat
1	2	3	4	5	6	7
8	9	10	11	12	13	14
15	16	17	18	19	20	21
22	23	24	25	26	27	28
29	30					

October 2019

Sun	Mon	Tue	Wed	Thu	Fri	Sat
		1	2	3	4	5
6	7	8	9	10	11	12
13	14	15	16	17	18	19
20	21	22	23	24	25	26
27	28	29	30	31		

November 2019

Sun	Mon	Tue	Wed	Thu	Fri	Sat
					1	2
3	4	5	6	7	8	9
10	11	12	13	14	15	16
17	18	19	20	21	22	23
24	25	26	27	28	29	30

December 2019

Sun	Mon	Tue	Wed	Thu	Fri	Sat
1	2	3	4	5	6	7
8	9	10	11	12	13	14
15	16	17	18	19	20	21
22	23	24	25	26	27	28
29	30	31				

January 2020

Sun	Mon	Tue	Wed	Thu	Fri	Sat
			1	2	3	4
5	6	7	8	9	10	11
12	13	14	15	16	17	18
19	20	21	22	23	24	25
26	27	28	29	30	31	

February 2020

Sun	Mon	Tue	Wed	Thu	Fri	Sat
			1	2	3	4
5	6	7	8	9	10	11
12	13	14	15	16	17	18
19	20	21	22	23	24	25
26	27	28	29	30	31	

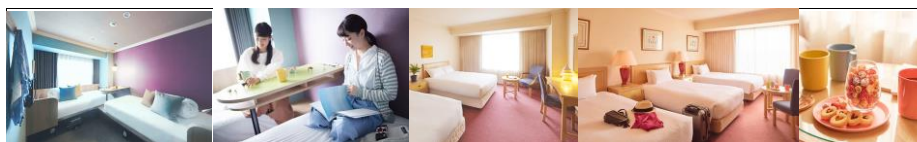
March 2020

Sun	Mon	Tue	Wed	Thu	Fri	Sat
1	2	3	4	5	6	7
8	9	10	11	12	13	14
15	16	17	18	19	20	21
22	23	24	25	26	27	28
29	30	31				

① Rates include buffet breakfast.

價格已包含早餐。
② Free WiFi in guest room
全房附設免費WI-FI上網

*All Rates in HKD per person per night



	Danran Room (18m ²)				Twin (27m ²) / Triple (30.3m ²) / Fourth (30.3m ²)					
	Single		Twin		Twin		Triple		Quad	
	Adult	Child	Adult	Child	Adult	Child	Adult	Child	Adult	Child
A	590	-	490	490	540	540	540	540	540	540
B	640	-	540	540	590	590	590	590	590	590
C	690	-	590	590	640	640	640	640	640	640
D	740	-	640	640	690	690	690	690	690	690
E	790	-	690	690	790	790	790	790	790	790
F	840	-	740	740	950	950	950	950	950	950
G	890	-	790	790	1,050	1,050	1,050	1,050	1,050	1,050
H	950	-	840	840	1,100	1,100	1,100	1,100	1,100	1,100
I	1,000	-	890	890	1,150	1,150	1,150	1,150	1,150	1,150
J	1,250	-	1,150	1,150	1,550	1,550	1,550	1,550	1,550	1,550
K	1,300	-	1,200	1,200	1,600	1,600	1,600	1,600	1,600	1,600

Age 0 - 3	Free (No Bed No Meal)
Age 4 - 11	Child Rate as tariff (Bed & Breakfast)



Hoshino Resorts OMO7 Asahikawa 2019



- 1) All Rates in HKD per person per night
- 2) Rates include room accommodation, buffet breakfast, all taxes and services fees.
- 3) Rates are NET rates and are NOT subject to any commissions.
- 4) All rooms are non-smoking.
- 5) Cancellation Policy:
Cancellation charge applicable subject to the table below:

After guarantee deadline	30 - 15 days prior to the check-in date	15 days or less prior to the check-in date
30%	50%	100%

- 6) Handling fee after Guarantee payment :

Name Amendment	HKD100 per booking
*Change of Room Type	HKD100 per room

*only available for 2 weeks prior to the check-in date

Above optional offers are only valid together with room reservation through PAM

For reservation and enquiry, please contact:

Hotline: 852 - 3678 2031, email : pamholidays@pam.com.hk
<http://www.pamholidays.com/>

Ref: OMO7_2019_TC