

# Other Recommended Affordable Hotels



## Hotel WBF Sapporo Chuo WBF 札幌中央飯店

Located centrally near Sapporo's landmark TV Tower and Nijo Fish Market, the Hotel WBF Sapporo Chuo is a great place to base yourself while you explore the city.

### Access

- New Chitose Airport: 60 mins by train
- Sapporo Kokusai Ski Resort: 70 mins by car
- Sapporo Teine: 40 mins by car

## Hotel WBF Fourstay Sapporo WBF Fourstay 札幌飯店

Set in the centre of Sapporo, Hotel WBF Fourstay Sapporo is a 3-star hotel that offers guests the perks of an urban stay with comfortable rooms.

### Access

- New Chitose Airport: 60 mins by train
- Sapporo Kokusai Ski Resort: 70 mins by car
- Sapporo Teine: 40 mins by car



## Hotel WBF Grande Asahikawa

### WBF 旭川格蘭大飯店

Located a short walk from Asahikawa Station, this hotel comes equipped with a spa and wellness centre perfect for those looking to pamper themselves after a day on the slopes.

#### Access

- Asahikawa Airport: 50 mins by bus
- New Chitose Airport: 135 mins by train / 150 mins by bus
- Sapporo: 95 mins by train
- Tomamu: 180 mins by car/bus



Twin Room



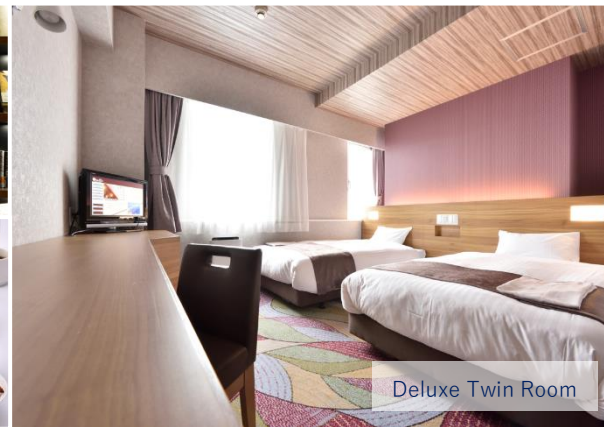
## Hotel WBF Kushiro

### WBF 釧路飯店

Located in the port of Kushiro, Hotel WBF Kushiro features simple guest rooms and free property-wide WiFi, located a convenient 5-minute drive from JR Kushiro Station.

#### Access

- New Chitose Airport: 95 mins by flight and car
- Kushiro Airport: 50 mins by car



Deluxe Twin Room



Standard Twin Room

## Hotel WBF Hakodate Watatsumi-no-yu

### WBF 函館飯店 海神浴池

Located a short walk from Hakodate Station, this hotel comes equipped with a sauna and hot spring. Easy access to the Bay Area and the Hakodateyama Ropeway and can be enjoyable with the best breakfast with fresh seafood.

#### Access

- Shin-Hakodate-Hokuto Station (Hokkaido Shinkansen): 25 mins by train
- Hakodate Airport: 30 mins by train or bus
- Ferry Terminal: 30 mins by bus



Remarks:

\*The above prices are in Hong Kong dollars and subject to change without prior notice

\*All photos are from Hotel WBF and for reference only

\*Welcome to contact us for more details